



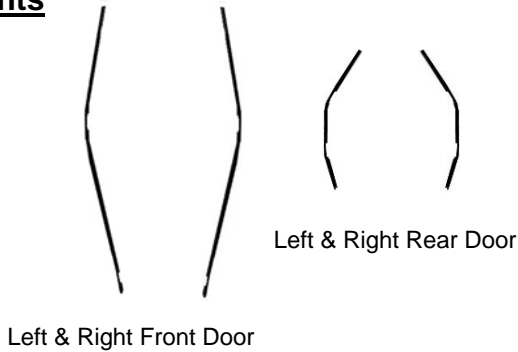
GENUINE ACCESSORIES
INSTALLATION INSTRUCTIONS

PART NUMBER

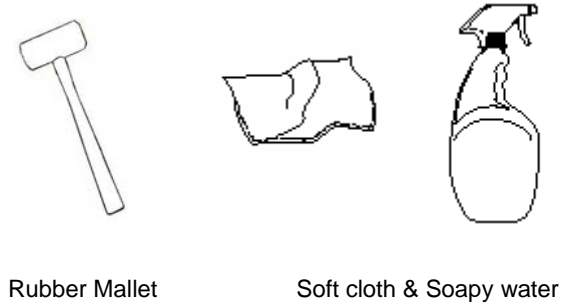
APPLICABLE MODEL:

Door Edge Guards

Kit Contents



Tools Required

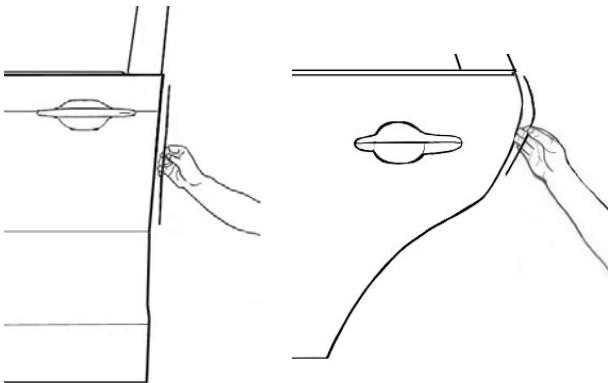


0 Before Installation (PRECAUTIONARY NOTES:)

- a. Identify your kit components by comparing them with the trailing edge of the vehicle doors.
- b. Clean the doors of any dirt, etc., with soft cloth and soapy water.
- c. It is important that door edge guards be installed with an initial series of light taps as heavy blows can “spring” and/or distort the guard, preventing a good fit.

1 Installation Preparation

Before seating the door edge guards, make sure they are properly positioned on the trailing edge of the open door, by aligning their bends with the bends in the door.



2 Installation Procedure

While holding the guard up to the door edge, partially seat it by taping it lightly, for its entire length using a rubber mallet. Then make a second pass of slightly heavier blows to fully seat it.

